

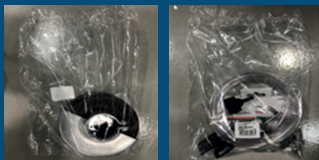
# PLASTIC BAGS REPLACEMENT PROJECT FOR BIODEGRADABLE BAGS

Another very relevant project at Bosch is the biodegradable bag. Within the tool packages, some components were packaged in conventional plastic bags.

Thinking more and more about sustainability, a project was created to replace them with biodegradable bags.

## LOOK AT THESE RESULTS!

### OLD SCENARIO CONVENTIONAL PLASTIC



With the consumption of **1,2 million** units of plastic bags for kits, **3,1 tons/-year** of plastic were used.

Decay  
Period:  
**450 years**

### CURRENT SCENARIO BIODEGRADABLE BAG



Since the material size change, the amount of plastic used has been reduced by **50%**.

We currently avoid the consumption of **1,6 tons of plastic**.

Decomposition period: **2 years**

See below how the biodegradable bags used in the packaging are.



Escanea para ver este contenido en Español.



Scan here to access this content in English.



# USE OF REFOREST WOOD IN PACKAGING

All Bosch tool packaging and product manuals, such as plastic suitcases, cardboard boxes and collective boxes, are manufactured of recycled raw material.

**Bosch** adheres to the **FSC (Forest Stewardship Council)**. This means that it guarantees sustainable land management, since the suppliers in Brazil have their own forests and are responsible for this sustainable management.



# 100%

FACTORY CAMPINAS-SP

Product  
Manuals



Tool  
Packaging



Collective  
Packaging



See the suitcase made with recycled raw material on the shelf.



Escanea para ver este contenido en Español.

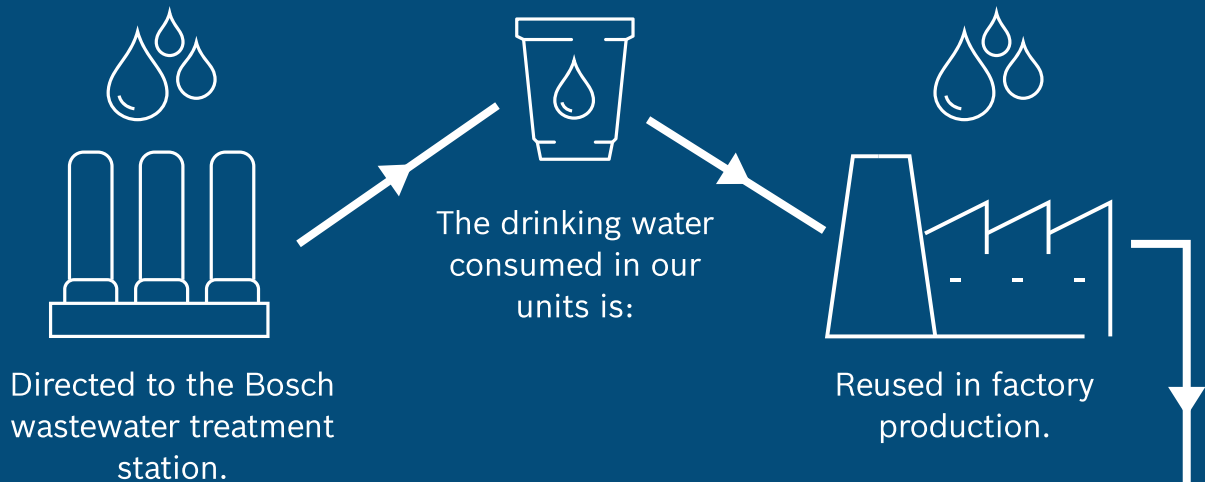


Scan here to access this content in English.



## SELF-SUFFICIENCY IN INDUSTRIAL WATER

At **Bosch** plants we use water efficiently through the modernization of infrastructure and processes.



This allows the reuse and recirculation of 100% of the industrial water.

What does Bosch intend to do in

### 5 years?

**33%  
REDUCTION**

in industrial water consumption

**29%  
REDUCTION**

in drinking water consumption



Escanea para ver este contenido en Español.



Scan here to access this content in English.



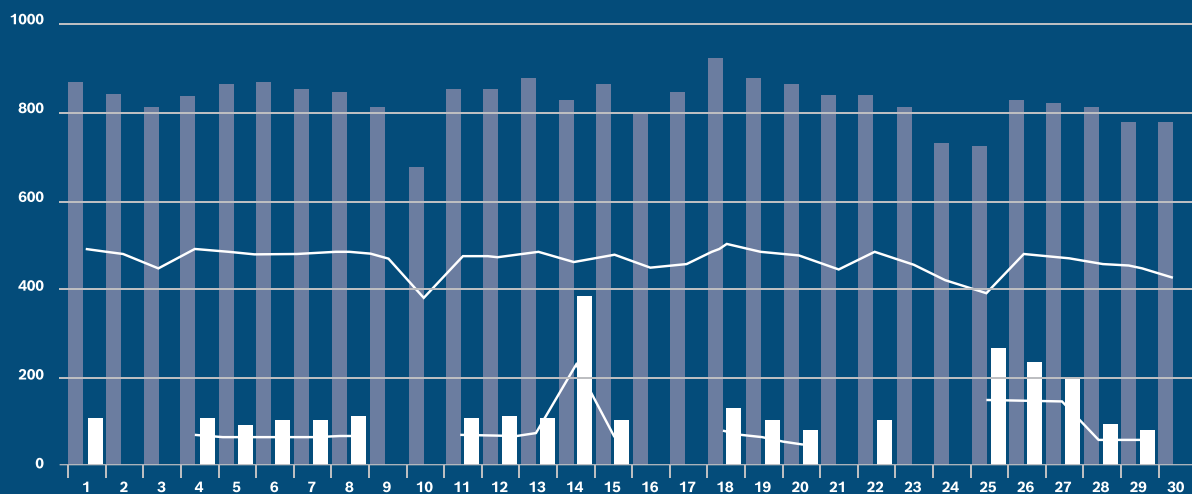
# ENERGY MANAGEMENT

The **Bosch Campinas Factory** has an energy management system that allows managing 450 machines with reduced and conscious consumption.



With this system it is possible to manage the machines that should be turned off at the end of the week, identify irregularities and act proactively to reduce electricity consumption. In total, 16 meters calculate consumption.

# CONSUMPTION BOSCH



**AVERAGE MONTHLY CONSUMPTION OF  
280 MEGAWATTS/MONTH**

